

AFMG 532

PARTS BREAKDOWN

PARTS NOT SHOWN		
PART#	DESCRIPTION	QTY
90055	14/4 SHP TO CONT.	5'
90055	14/4 3/4HP TO CONT.	4'
90886	12/4 POWER CORD	16'
90301	3/4" DRYLOCK	2
90027	3/8" DRYLOCK	1

90898 10/3 WIRE FOR
208/230 VOLT 1 PHASE

• TAP AT ASSEMBLY
LOCTITE AT ASSEMBLY

OPTIONAL:
WINSMITH GEARBOX,
68004, 64004 AND
MOUNTING BRACKETS,
68104 AND 68105.

68076
(FASTEN WITH
GEARBOX BOLT)

LABELS
30259 HANDS OUT OF HOPPER
62113 ROTATION
90084 DANGER ELECTRICAL
90085 WARNING
90089 USA
90091 DANGER MOVING PARTS
90586 I.D.
90789 DFE LOGO
90894-02 230 VOLT
90924 AFMG 532

#71607 (8)
68031
68066-01
90919 (2)

68070 (4)
68004-01
68058
51055
51054

OPTIONAL:
(30095 1-PHASE
115/208/230 V)
(LESSON 3-PHASE
208/230 V 110047)

70155 (8)
70105 (8)
79030 (8)
64004-01
68067
71067 (8)
70712 (8)
68064
68024

68084
68048 (2)
68036 (2)
68080 (2)
70111 (2)
68034 (2)
68081
68035
68079 (2)
68037 (2)
68075 (2)
70105 (2)
71507 (6)
70864 (2)
#71507 (4)
68072 (2)
90509 (2)

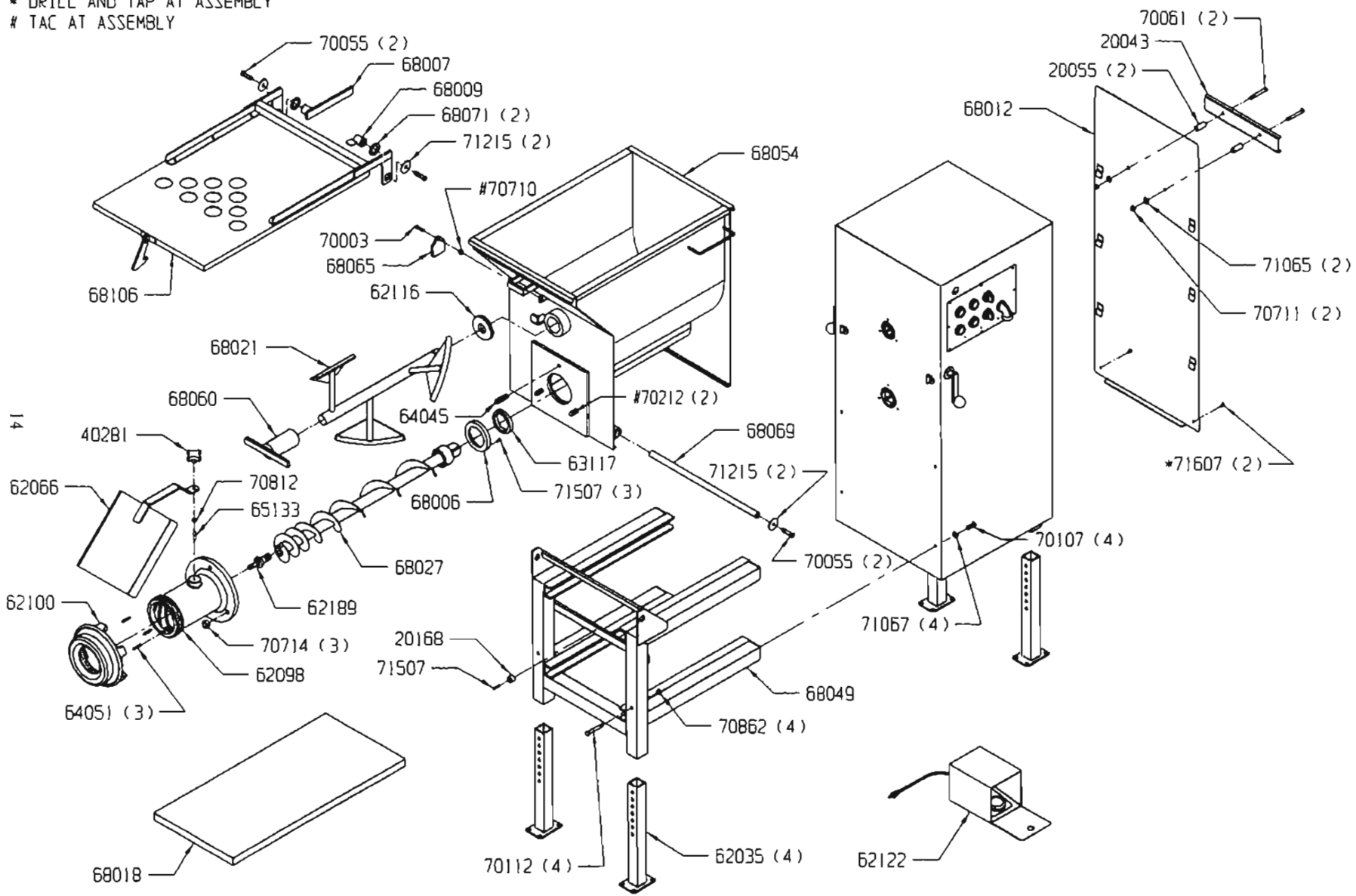
68025 208/230/460 V 3PH
68025-01 208/230 V 1PH

OPTIONAL:
(68005 1-PHASE
208/230 VOLT)
(LESSON 3-PHASE
230/460 V 30269)

#71607 (8)

PARTS DIAGRAM

* DRILL AND TAP AT ASSEMBLY
TAC AT ASSEMBLY

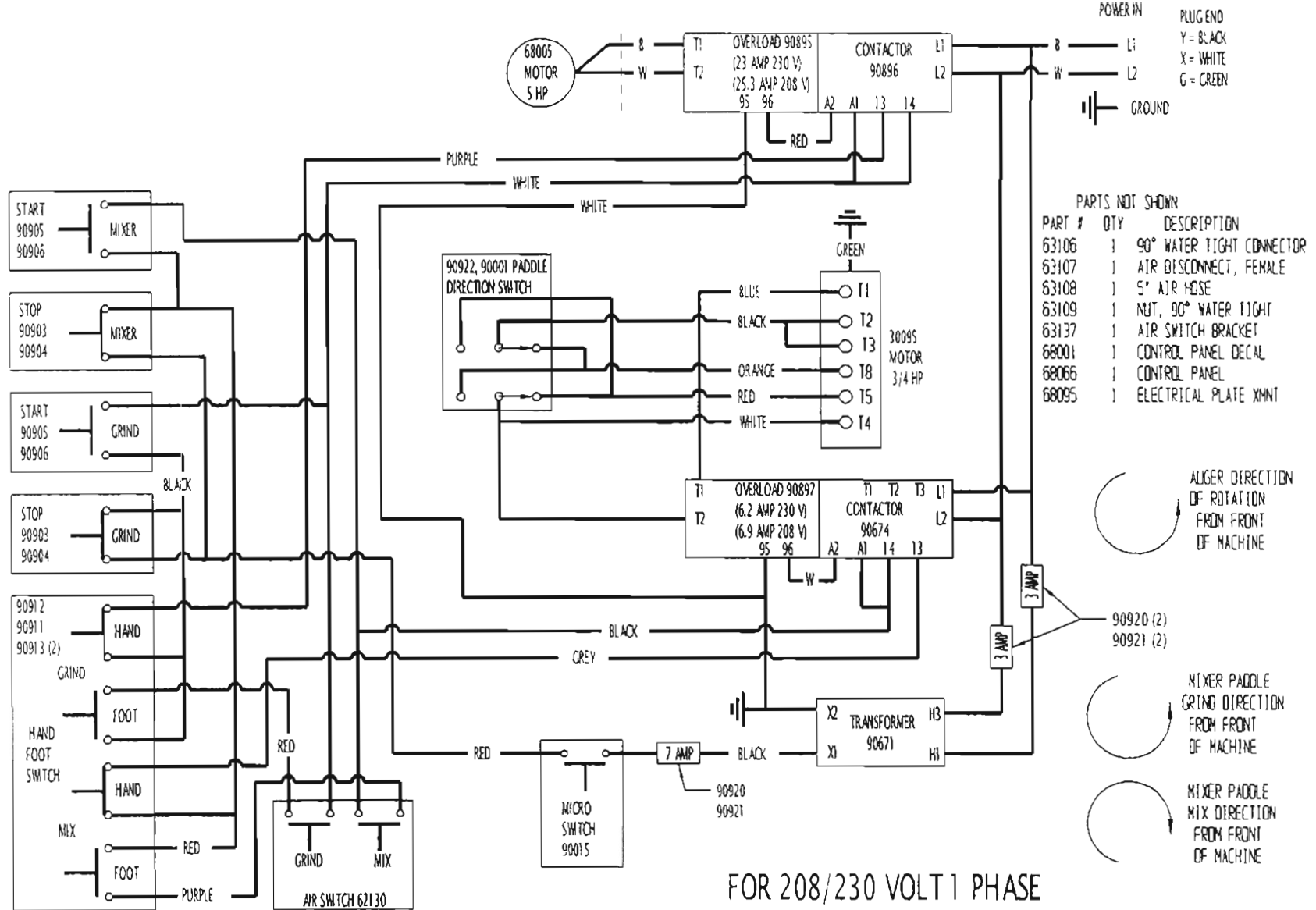


PARTS DIAGRAM

PARTS LIST

ITEM #	PART #	DESCRIPTION	QTY	ITEM #	PART #	DESCRIPTION	QTY
1	20043	HANDLE	1	46	68070	GEARBOX BRACKET BALDOR	4
2	20055	HANDLE SPACER	2	47	68071	LID WASHER PLASTIC	2
3	20168	RUBBER BUMPER	1	48	68072	LOCK LEVER	2
4	30259	DECAL HANDS OUT HOPPER	1	49	68075	LOCK ROD	2
5	30266	3/4 HP MOTOR BALDOR	1	50	68076	CORD RETAINER	1
6	30269-01	5 HP MOTOR BALDOR	1	51	68079	LOCK ECCENTRIC	2
7	40281	KNOB	1	52	68080	LOCK SPRING	2
8	51054	SEAL	1	53	68081	LOCK PLATE	1
9	51055	SEAL RETAINER	1	54	68084	LOCK PLATE / STOP	1
10	62035	ADJUSTABLE LEG	4	55	68102	SHIPPING PALLET	1
11	62043	CASTER BOX ASSEMBLY	1	56	*68103	CLEAR ACRYLIC LID	1
12	62066	SPLASH GUARD	1	57	68106	STAINLESS STEEL LID	1
13	62098	#32 BOWL	1	58	70003	1/4-20 X 3/4" SS BOLT	1
14	62100	#32 RING	1	59	70055	5/16-18 X 1" SS BOLT	4
15	62113	ROTATION LABEL	1	60	70061	5/16-18 X 2 SS BOLT	2
16	62116	PADDLE SEAL	1	61	70105	3/8-16 X 1" SS BOLT	10
17	62122	FOOT CONTROL ASSEMBLY	1	62	70107	3/8-16 X 1-1/4" SS BOLT	4
18	62189	AUGER STUD	1	63	70111	3/8-16 X 2" SS BOLT	2
19	63117	AUGER SEAL	1	64	70112	3/8-16 X 2-1/4" SS BOLT	4
20	64004-01	7.5:1 GEARBOX BALDOR	1	65	70155	7/16-14 X 1" SS BOLT	8
21	64045	1/2-13 X 1-1/2" STUD	1	66	70212	1/2-13 X 1-3/4" SS BOLT	2
22	64051	BOWL PIN	3	67	70710	1/4-20 SS NUT	1
23	65133	SPLASH GUARD STUD	1	68	70711	5/16-18 NUT	2
24	68004-01	100:1 GEARBOX BALDOR	1	69	70712	3/8-16 SS NUT	8
25	68006	AUGER SEAL RETAINER	1	70	70714	1/2-13 NUT	3
26	68007	LEFT LID PIVOT	1	71	70812	3/8-16 JAM NUT	1
27	68009	RIGHT LID PIVOT	1	72	70862	3/8-16 NYLOCK	4
28	68012	ACCESS COVER	1	73	70864	1/2-13 NYLOCK	2
29	*68014	GRATED LID	1	74	71065	5/16 SS LOCK WASHER	2
30	68018	ADJUSTABLE SHELF	1	75	71067	3/8" SS LOCK WASHER	12
31	68021	PADDLE	1	76	71215	5/16" SS FENDER WASHER	4
32	68024	SEAL	1	77	71507	10-24 X 3/8" SCREW	14
33	68025	ELECTRICAL ASS'Y 3 PHASE	1	78	71607	10-32 X 3/8" SCREW	18
34	*68025-01	ELECTRICAL ASS'Y 1 PHASE	1	79	79008	5/16 X 1-1/2" LAG SCREW	4
35	68027	AUGER	1	80	79030	7/16 SS LOCKWASHER	8
36	68031	HOOD/FRAME ASSEMBLY	1	81	90055	14/4 WIRE	9
37	68034	3/16" PIN	2	82	90084	DANGER DECAL, ELEC.	1
38	68035	LOCK SHAFT	1	83	90085	WARNING DECAL	1
39	68036	LOCK SHAFT BUSHING	2	84	90089	MADE IN USA DECAL	2
40	68037	LOCK ROD BUSHING	2	85	90091	DANGER DECAL, PARTS	1
41	68048	LOCK SPACER	2	86	90301	3/4" DRY LOCK	2
42	68049	FRONT FRAME	1	87	90509	BALL KNOB	2
43	68054	HOPPER	1	88	90586	I.D. DECAL	1
44	68060	PADDLE RETAINER ASS'Y	1	89	90663	30 X 60 X 48 BOX	1
45	68064	AUGER SEAL RETAINER	1	90	90789	DFE LOGO	2
46	68065	LATCH	1	91	90894-02	DECAL 230 VOLT	1
47	68066-01	CONTROL COVER	1	92	90919	RUBBER SEAL	6'
48	68067	AUGER DRIVE SHAFT	1	93	90886	12/4 WIRE	16'
49	68068	PADDLE DRIVE SHAFT	1	94	*90898	10/3 WIRE (FOR 1 PHASE)	21'
50	68069	PIVOT ROD	1	95	90924	AFMG 532 LABEL	2

ELECTRICAL SCHEMATIC

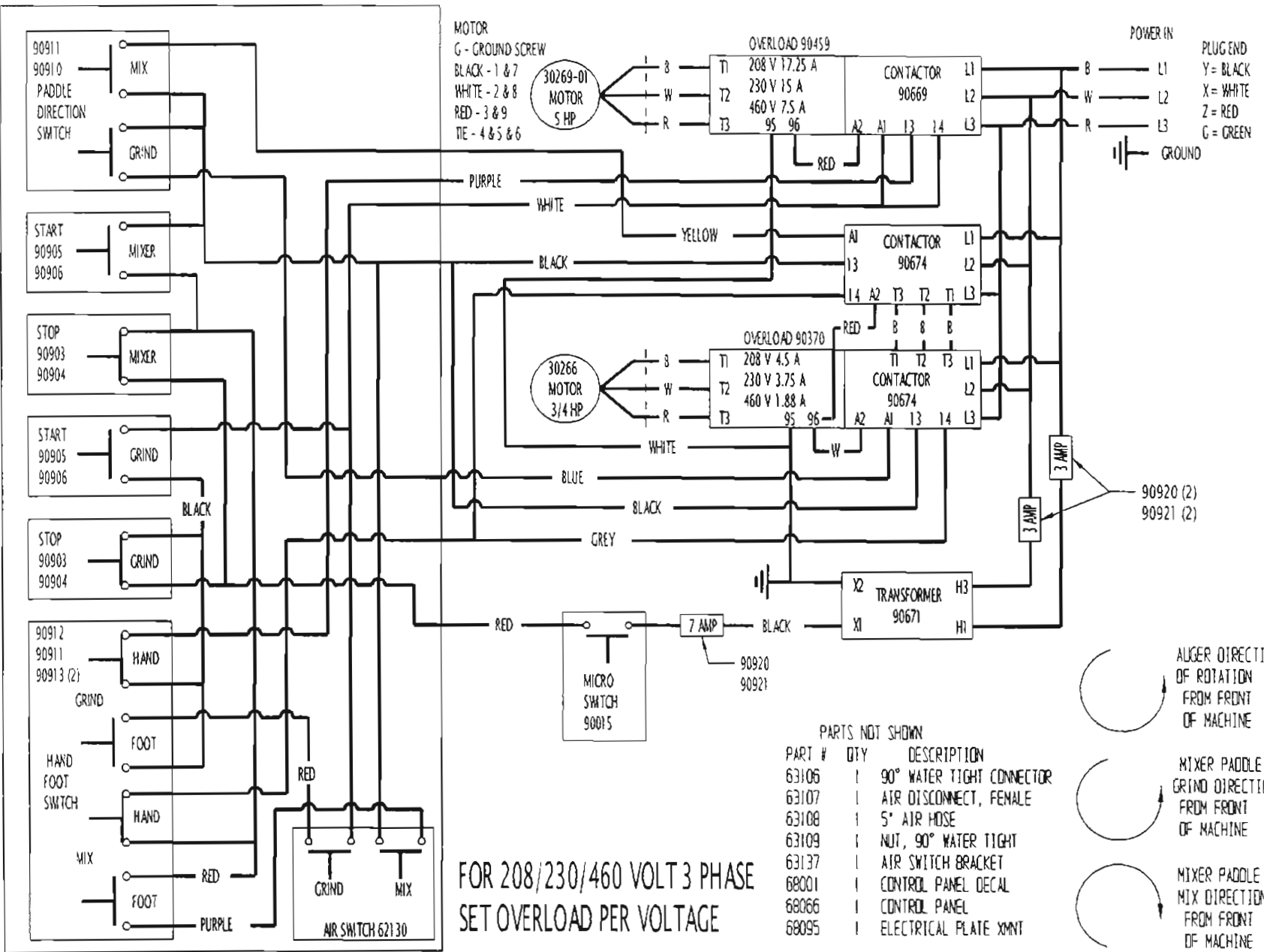


PARTS NOT SHOWN

PART #	QTY	DESCRIPTION
63106	1	90° WATER TIGHT CONNECTOR
63107	1	AIR DISCONNECT, FEMALE
63108	1	5" AIR HOSE
63109	1	NUT, 90° WATER TIGHT
63137	1	AIR SWITCH BRACKET
68001	1	CONTROL PANEL DECAL
68066	1	CONTROL PANEL
68095	1	ELECTRICAL PLATE XMNT

FOR 208/230 VOLT 1 PHASE

ELECTRICAL SCHEMATIC



FOR 208/230/460 VOLT 3 PHASE
 SET OVERLOAD PER VOLTAGE

PARTS NOT SHOWN

PART #	QTY	DESCRIPTION
63106	1	90° WATER TIGHT CONNECTOR
63107	1	AIR DISCONNECT, FEMALE
63108	1	5" AIR HOSE
63109	1	NUT, 90° WATER TIGHT
63137	1	AIR SWITCH BRACKET
68001	1	CONTROL PANEL DECAL
68066	1	CONTROL PANEL
68095	1	ELECTRICAL PLATE XMNT

